

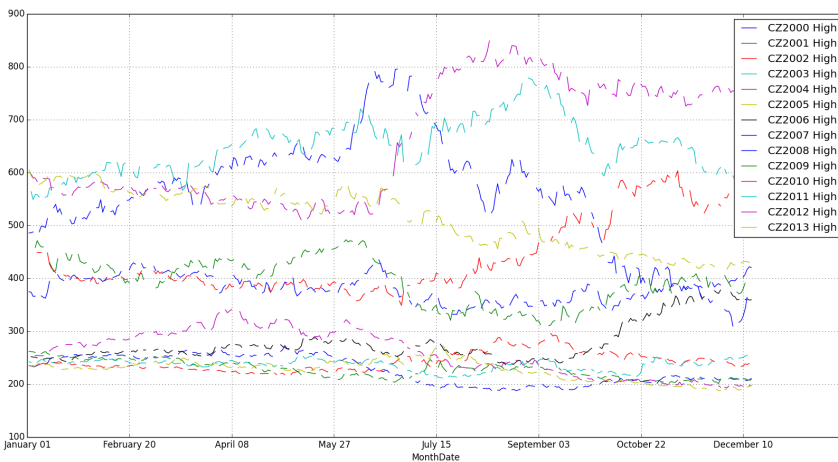
TM.

GiggleWorth's K©rny News & Market Newsletter

A Shyster Enterprise

*Happily selling our two cents worth
for as much as we can, for as long as we can.*

2014 - APRIL

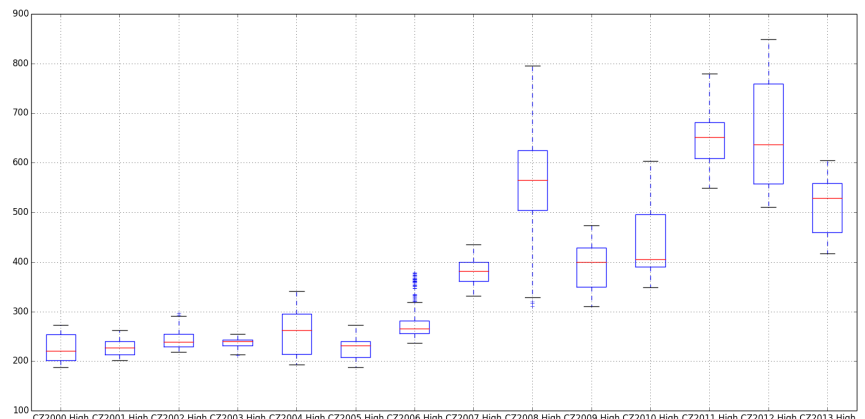


**Anybody could tell
You that these graphs
are supposed to
mean something.
And at GigglesWorth
We do just that.**

Hey, listen up!

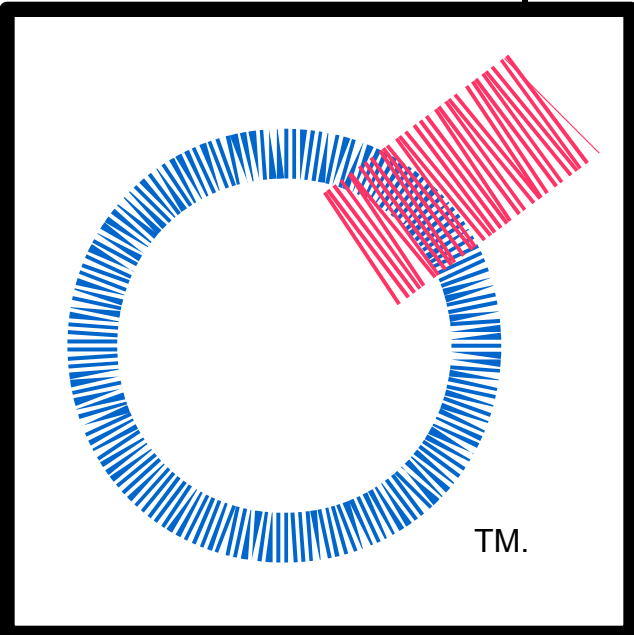
**These graphs mean
Something!**

Now, about our fee...



Although Mr GigglesWorth is more than happy to offer advice, our advice is not to take it. Word to the wise: This is a joke and not to be taken seriously.

CZ1970	Low: 116.13	High: 159.75	CZ1970	Low: 116.13	High: 159.75
CZ1971	Low: 112.38	High: 162.88	CZ1971	Low: 112.38	High: 162.88
CZ1972			CZ1972		
CZ1973			CZ1973		
CZ1974			CZ1974		
CZ1975			CZ1975		
CZ1976			CZ1976		
CZ1977			CZ1977		
CZ1978			CZ1978		
CZ1979			CZ1979		
CZ1980			CZ1980		
CZ1981			CZ1981		
CZ1982			CZ1982		
CZ1983			CZ1983		
CZ1984			CZ1984		
CZ1985			CZ1985		
CZ1986	Low: 151.25	High: 235.25	CZ1986	Low: 151.25	High: 235.25
CZ1987	Low: 144.75	High: 216.0	CZ1987	Low: 144.75	High: 216.0
CZ1988			CZ1988		
CZ1989			CZ1989		
CZ1990			CZ1990		
CZ1991			CZ1991		
CZ1992			CZ1992		
CZ1993			CZ1993		
CZ1994			CZ1994		
CZ1995			CZ1995		
CZ1996			CZ1996		
CZ1997			CZ1997		
CZ1998			CZ1998		
CZ1999			CZ1999		
CZ2000			CZ2000		
CZ2001	Low: 198.25	High: 275.0	CZ2001	Low: 198.25	High: 275.0
CZ2002	Low: 215.0	High: 296.0	CZ2002	Low: 215.0	High: 296.0
CZ2003			CZ2003		
CZ2004			CZ2004		
CZ2005			CZ2005		
CZ2006			CZ2006		
CZ2007			CZ2007		
CZ2008			CZ2008		
CZ2009			CZ2009		
CZ2010			CZ2010		
CZ2011			CZ2011		
CZ2012			CZ2012		
CZ2013	Low: 398.25	High: 665.0	CZ2013	Low: 398.25	High: 665.0



SELL! SELL! SELL!

What goes up,
must come down.

Quick View
CZ2014

SELL! SELL! SELL!

The corns on my feet are acting up, going to be a bumper crop, so most definitely time to sell

Our recommendation: **SELL!**

In Review
CZ2014

April Open: 498.00
April Close: 509.25

G-PICK™ : **BUY!**
Pr©fit: \$11.25/contract!

Cows are in a bulls market. The price of steak is going up up up. And this is only going to get worse as we go deeper into May, the sign of the Bull – Taurus. What does this have to do with corn? Cows eat corn. Pigs eat corn. And chickens eat corn. At this is only going to get worse as we head off into the barbeque season when wholesale corn on the cob consumption will begin. Get out while you can. Sell. Sell. Sell. Sell. Sell. Buy a little. Then Sell it all.